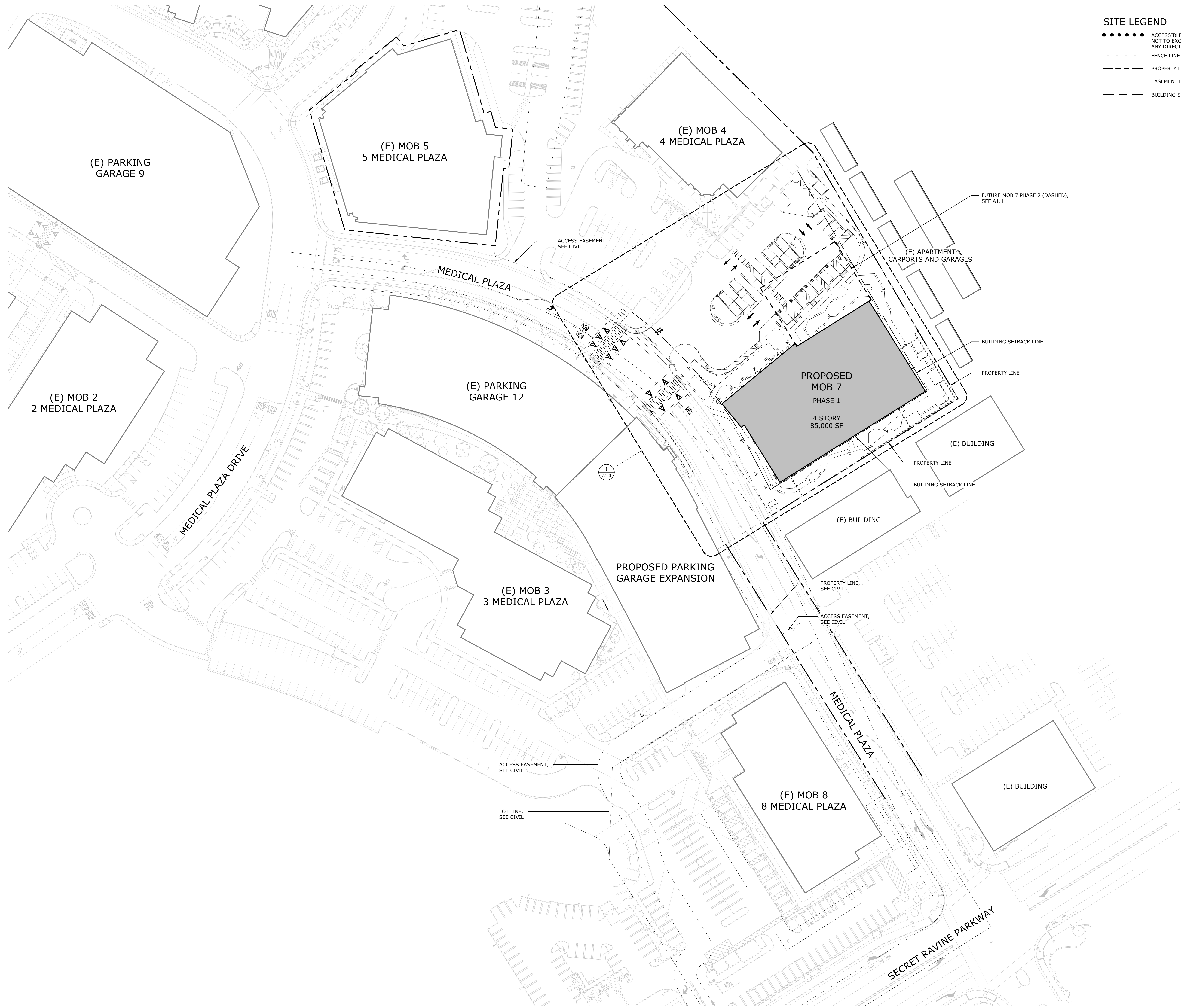
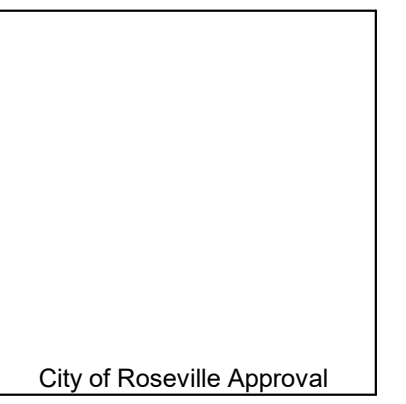


- SITE LEGEND**
- ACCESSIBLE PATH OF TRAVEL  
NOT TO EXCEED 2% CROSS SLOPE IN  
ANY DIRECTION.
  - FENCE LINE
  - — — — — PROPERTY LINE
  - - - - - EASEMENT LINE
  - - - - - BUILDING SETBACK LINE



CITY APPROVAL STAMP



THIS DRAWING IS NOT FINAL OR TO BE  
USED FOR CONSTRUCTION UNTIL IT IS  
SIGNED BY THE ARCHITECT/ENGINEER

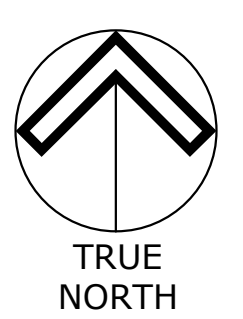
ENTITLEMENT PACKAGE

REVISION	BY	DATE

SUTTER ROSEVILLE MEDICAL CENTER  
MEDICAL OFFICE  
BUILDING 7

7 MEDICAL PLAZA  
ROSEVILLE, CA 95661

SITE PLAN OVERALL



C1014.00  
AS SHOWN  
2 MAY 2022

A0.0

5/2/2022 12:12:22 PM C:\BIM\2021\Projects\C1014.00-Sutter Roseville MOB 10\_A21\_Plan\pdr\pdr.rvt

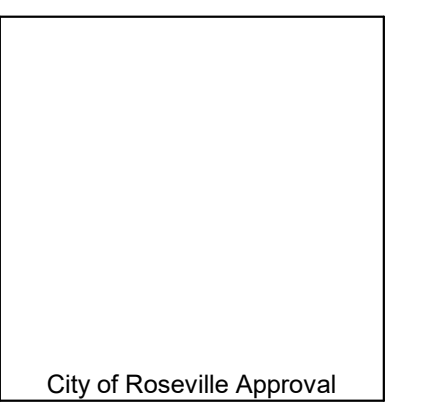
SITE PLAN NOTES

1. THE ACCESSIBLE ROUTE OF TRAVEL (OR PATH OF TRAVEL) IS A CONTINUOUS UNOBSTRUCTED WALKWAY (OR PATH) CONNECTING ALL ACCESSIBLE ELEMENTS AND SPACES AS INDICATED ON THIS SHEET. THE CONTRACTOR SHALL VERIFY THAT A PERSON CAN NEGOTIATE THE ACCESSIBLE ROUTE WITH A DISABILITY USING A WHEELCHAIR AND THAT THE ROUTE IS ALSO SAFE AND USABLE BY PERSONS WITH OTHER DISABILITIES.
2. ALL WALKS, SIDEWALKS AND LANDINGS THAT ARE PART OF THE ACCESSIBLE ROUTE OF TRAVEL SHALL HAVE A CONTINUOUS COMMON SURFACE, NOT INTERRUPTED BY STEPS OR BY ABRUPT CHANGES IN LEVEL EXCEEDING 1/2 INCH, AND SHALL HAVE A MINIMUM WIDTH OF 48 INCHES, UNLESS NOTED OTHERWISE. THE SLOPE IN THE DIRECTION OF TRAVEL SHALL BE LESS THAN 1:20 (5%) WITH A MAXIMUM CROSS SLOPE OF 1/4 INCH PER FOOT (2%), UNLESS OTHERWISE NOTED.
3. ALL DESIGNATED ACCESSIBLE RAMPS SHALL HAVE A MAXIMUM SLOPE OF 1:12 (8.33%) IN THE DIRECTION OF TRAVEL WITH A MAXIMUM CROSS SLOPE OF 1/4 INCH PER FOOT (2%), UNLESS OTHERWISE NOTED.
4. SEE CIVIL DRAWINGS FOR FULL EXTENT OF SITE WORK IN THIS CONTRACT.
5. SEE ELECTRICAL DRAWINGS FOR SITE AND BUILDING LIGHTING.

SITE LEGEND

- ACCESSIBLE PATH OF TRAVEL NOT TO EXCEED 2% CROSS SLOPE IN ANY DIRECTION.
- FENCE LINE
- — — — — PROPERTY LINE
- - - - - EASEMENT LINE
- - - - - BUILDING SETBACK LINE

CITY APPROVAL STAMP



THIS DRAWING IS NOT FINAL OR TO BE USED FOR CONSTRUCTION UNTIL IT IS SIGNED BY THE ARCHITECT/ENGINEER

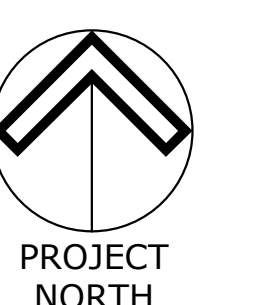
ENTITLEMENT PACKAGE

REVISION BY DATE

SUTTER ROSEVILLE MEDICAL CENTER  
MEDICAL OFFICE  
BUILDING 7

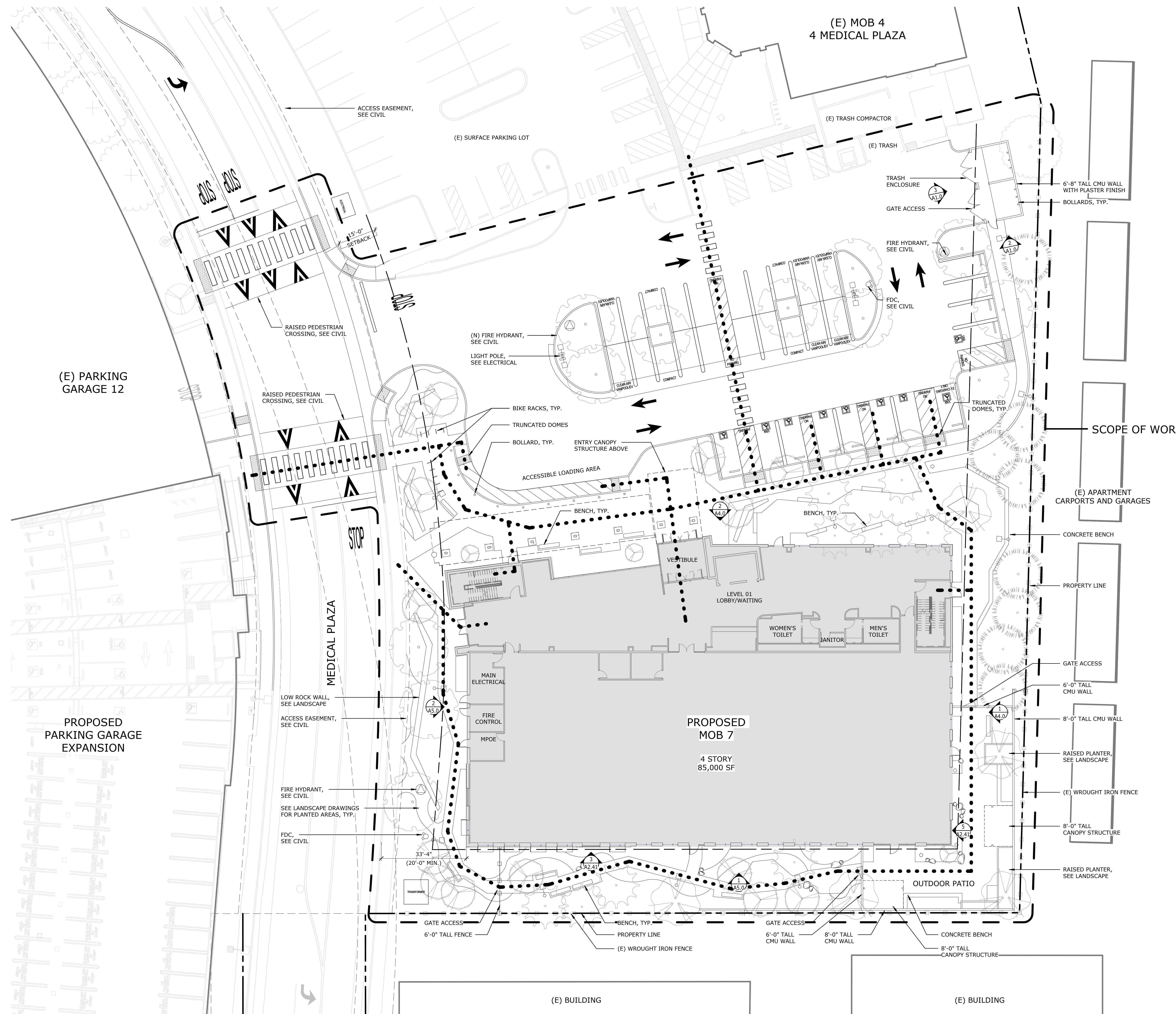
7 MEDICAL PLAZA  
ROSEVILLE, CA 95661

SITE PLAN - ENLARGED



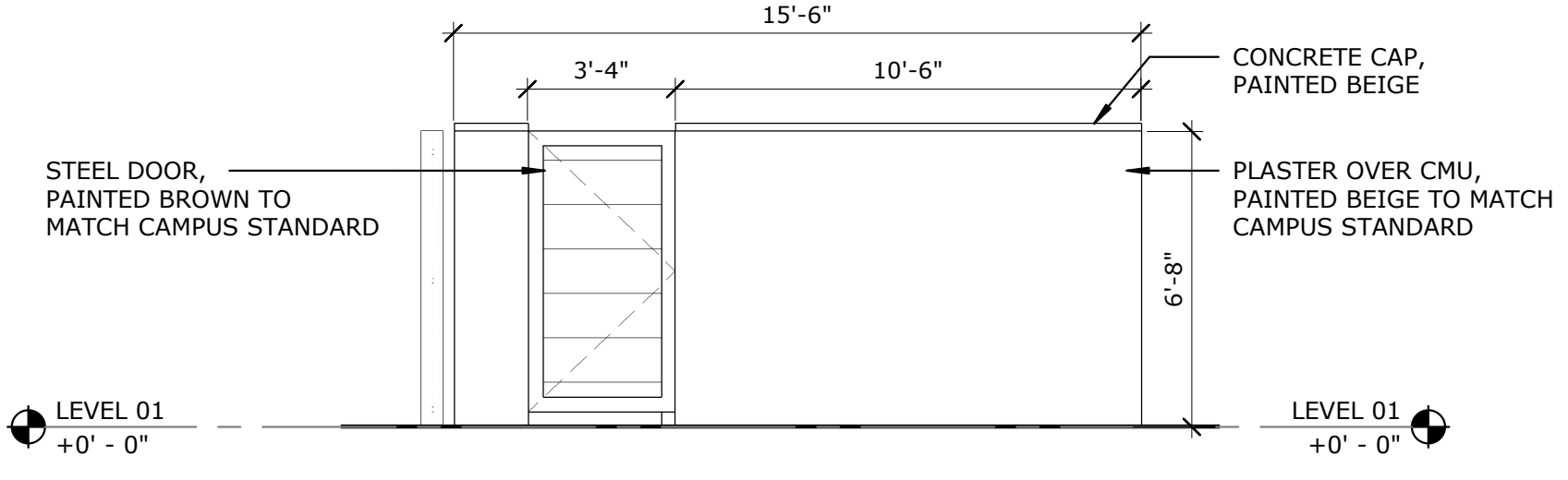
C1014.00  
AS SHOWN  
2 MAY 2022

A1.0

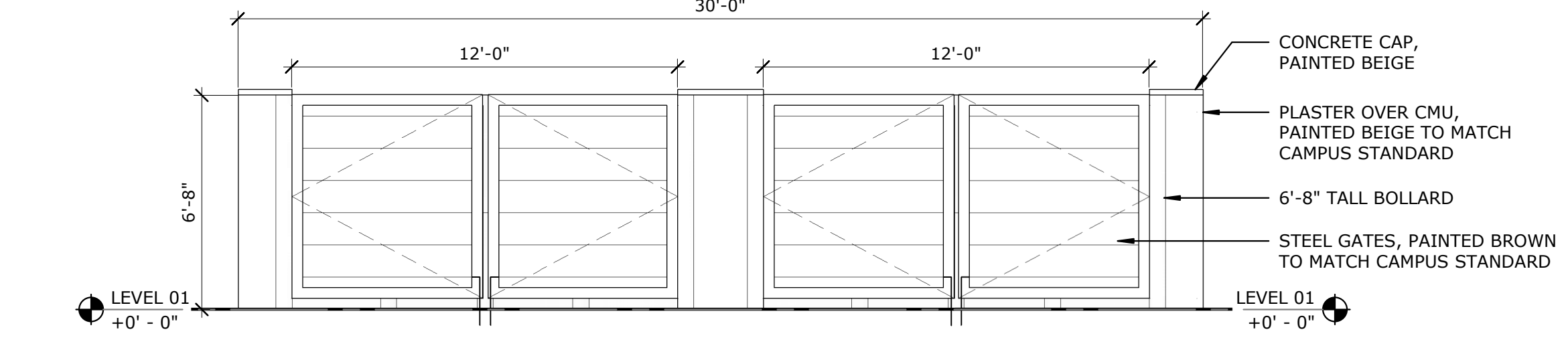


1 SITE PLAN - ENTITLEMENTS

1/16" = 1'-0"



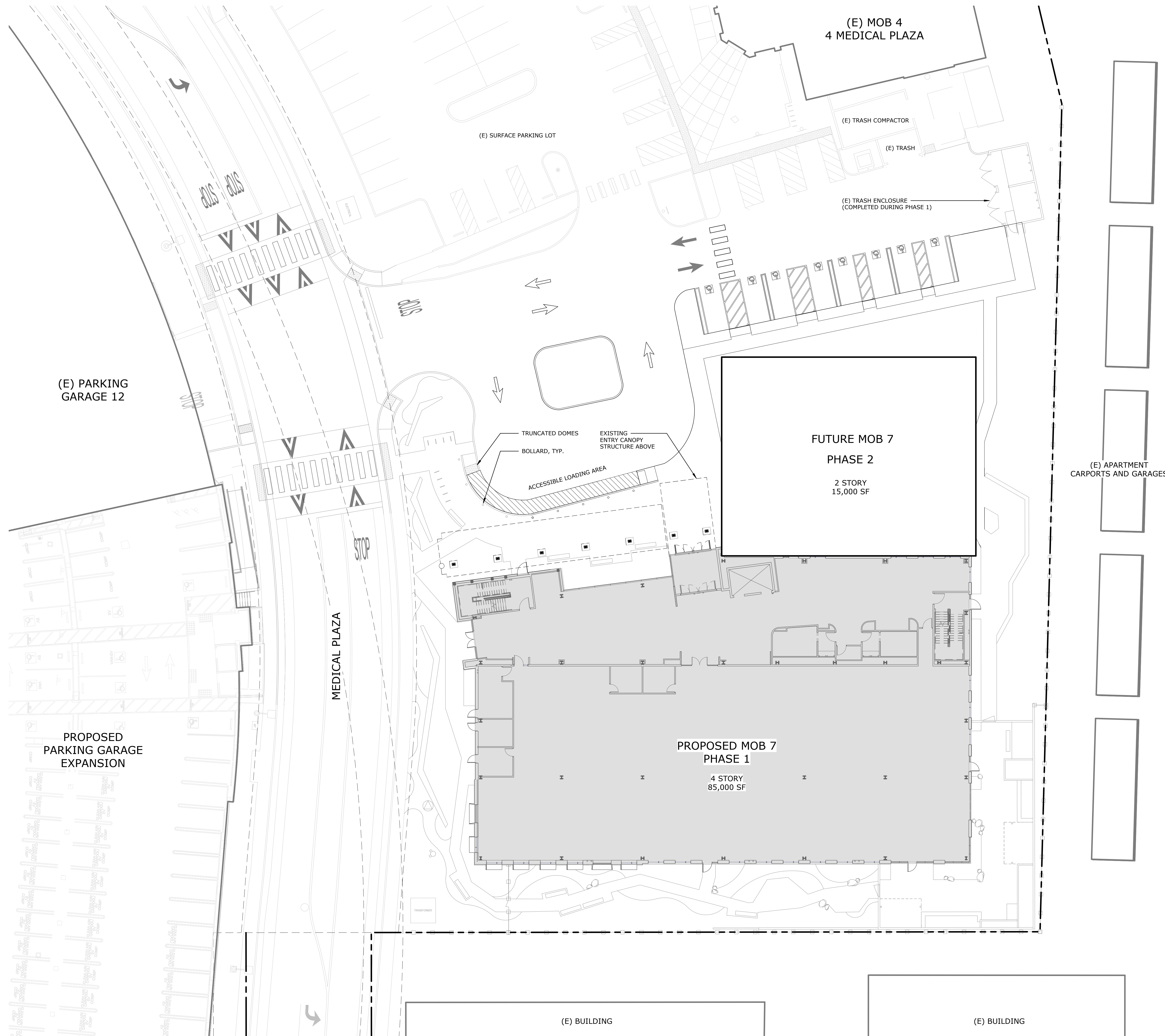
2 TRASH ENCLOSURE - NORTH - ENTITLEMENTS  
1/4" = 1'-0"



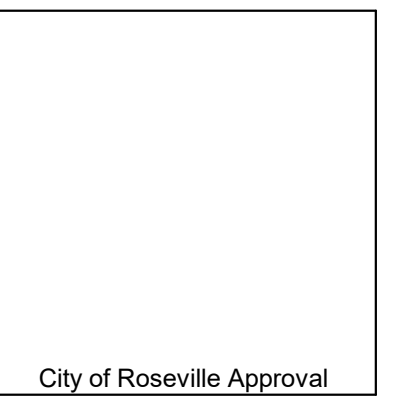
3 TRASH ENCLOSURE - EAST - ENTITLEMENTS  
1/4" = 1'-0"

5/2/2022 12:12:25 PM C:\BIM\2021\Projects\C1014.00-Sutter Roseville MOB 10\_A21\_p\shadingr4149.rvt

- SITE LEGEND**
- ACCESSIBLE PATH OF TRAVEL  
NOT TO EXCEED 2% GROSS SLOPE IN  
ANY DIRECTION.
  - +—+—+— FENCE LINE
  - — — — — PROPERTY LINE
  - - - - - EASEMENT LINE
  - — — — — BUILDING SETBACK LINE



CITY APPROVAL STAMP



THIS DRAWING IS NOT FINAL OR TO BE  
USED FOR CONSTRUCTION UNTIL IT IS  
SIGNED BY THE ARCHITECT/ENGINEER

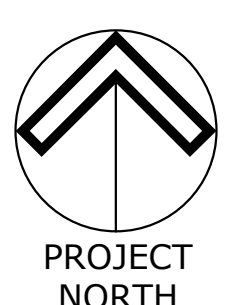
ENTITLEMENT PACKAGE

REVISION BY DATE

SUTTER ROSEVILLE MEDICAL CENTER  
MEDICAL OFFICE  
BUILDING 7

7 MEDICAL PLAZA  
ROSEVILLE, CA 95661

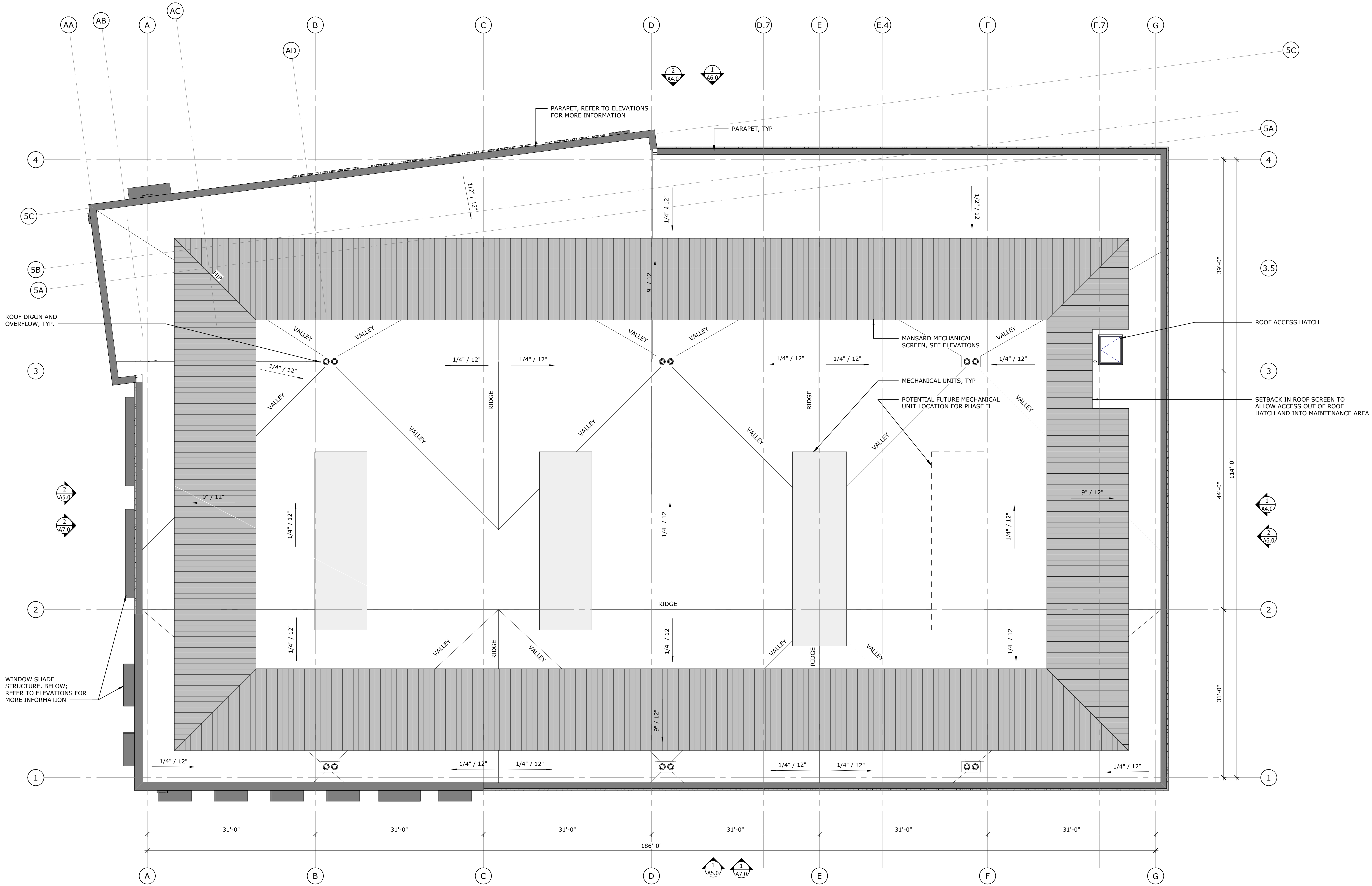
SITE PLAN - PHASE 2



C1014.00  
AS SHOWN  
2 MAY 2022

A1.1

1 SITE PLAN - ENTITLEMENTS PHASE 2  
1/16" = 1'-0"



CITY APPROVAL STAMP



THIS DRAWING IS NOT FINAL OR TO BE USED FOR CONSTRUCTION UNTIL IT IS SIGNED BY THE ARCHITECT/ENGINEER

ENTITLEMENT PACKAGE

REVISION	BY	DATE

SUTTER ROSEVILLE MEDICAL CENTER  
MEDICAL OFFICE  
BUILDING 7

7 MEDICAL PLAZA  
ROSEVILLE, CA 95661

ROOF PLAN



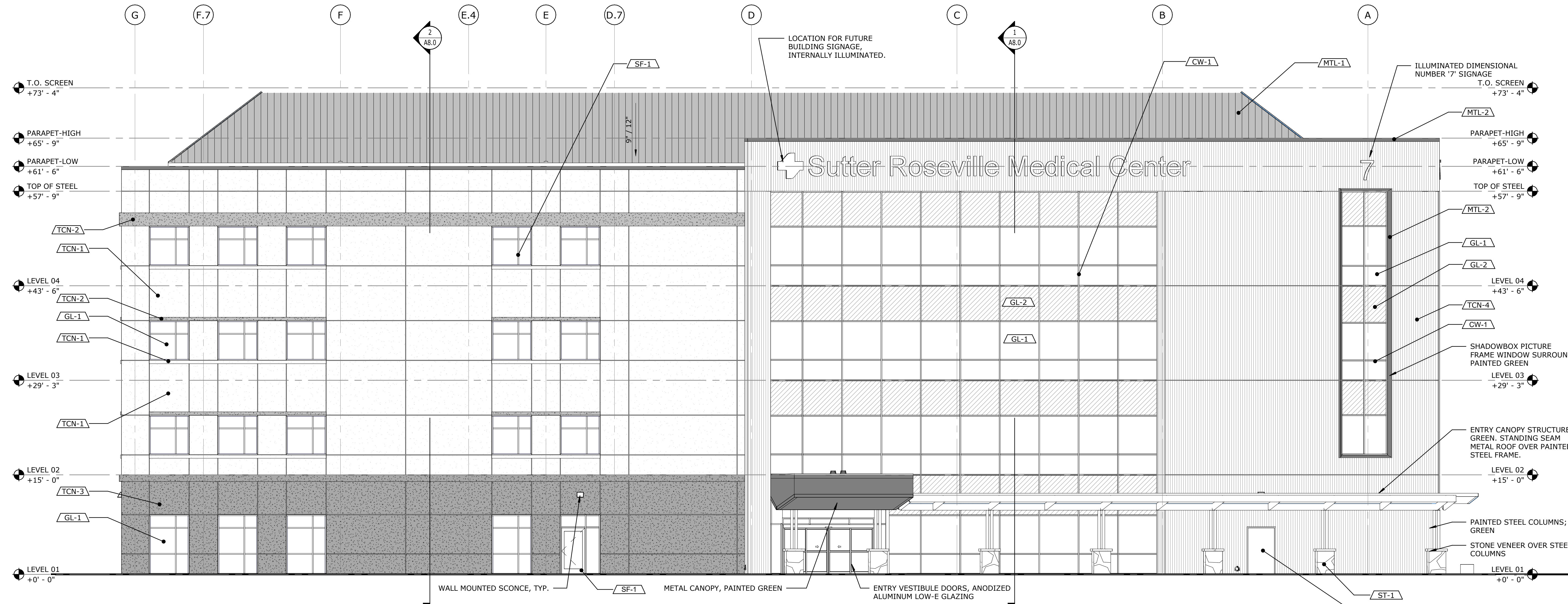
C1014.00  
AS SHOWN  
2 MAY 2022

A2.0

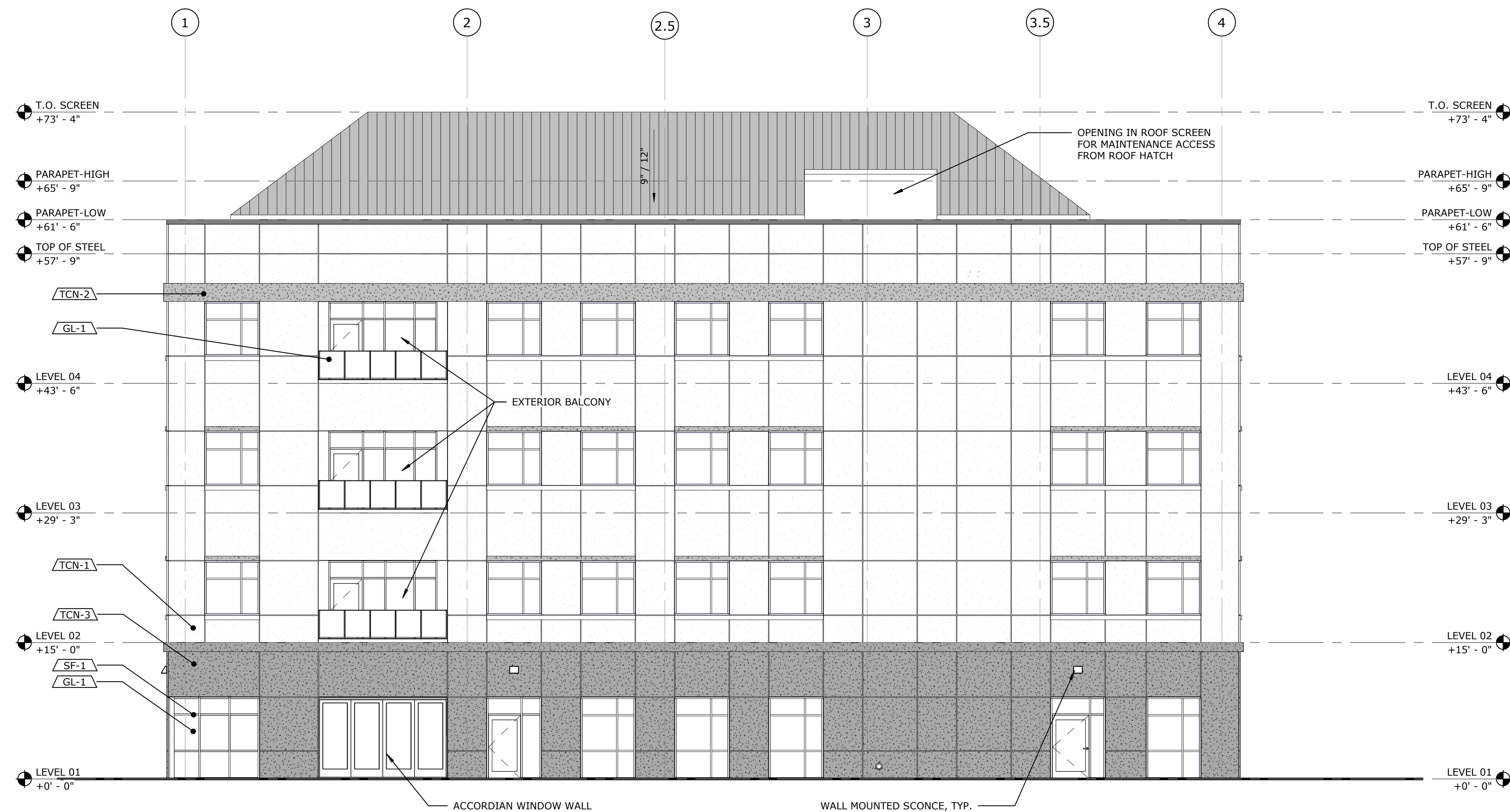
5/2/2022 12:12:28 PM C:\BIM\2021\Projects\C1014.00-Sutter Roseville MOB\_10\_A21\_pharding\R419.rvt

EXTERIOR FINISH LEGEND

- /TCN-1 THINSHELL CONCRETE - BEIGE
- /TCN-2 THINSHELL CONCRETE - GREEN
- /TCN-3 THINSHELL CONCRETE - BROWN
- /TCN-4 THINSHELL CONCRETE - BEIGE WITH VERTICAL TEXTURE
- /MTL-1 FACTORY PAINTED STANDING SEAM METAL - GREEN
- /MTL-2 FACTORY PAINTED METAL - GREEN
- /CW-1 CLEAR ANODIZED ALUMINUM CURTAINWALL
- /SF-1 CLEAR ANODIZED ALUMINUM STOREFRONT
- /GL-1 LOW-E VISION GLAZING
- /GL-2 SPANDREL GLAZING
- /PT-1 PAINTED BROWN TO MATCH CAMPUS STANDARD
- /PT-2 PAINTED BEIGE TO MATCH CAMPUS STANDARD

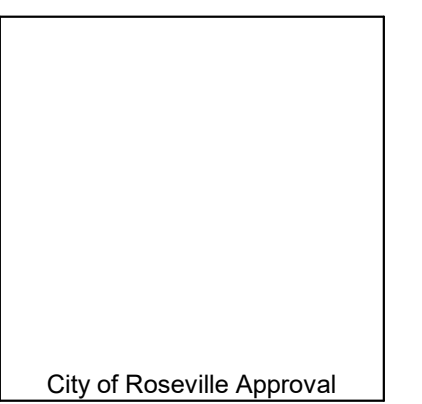


2 EXTERIOR ELEVATION - NORTH - ENTITLEMENTS  
1/8" = 1'-0"



1 EXTERIOR ELEVATION - EAST - ENTITLEMENTS  
1/8" = 1'-0"

CITY APPROVAL STAMP



THIS DRAWING IS NOT FINAL OR TO BE USED FOR CONSTRUCTION UNTIL IT IS SIGNED BY THE ARCHITECT/ENGINEER

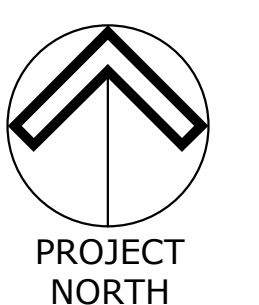
ENTITLEMENT PACKAGE

REVISION BY DATE

SUTTER ROSEVILLE MEDICAL CENTER  
MEDICAL OFFICE  
BUILDING 7

7 MEDICAL PLAZA  
ROSEVILLE, CA 95661

BUILDING ELEVATIONS

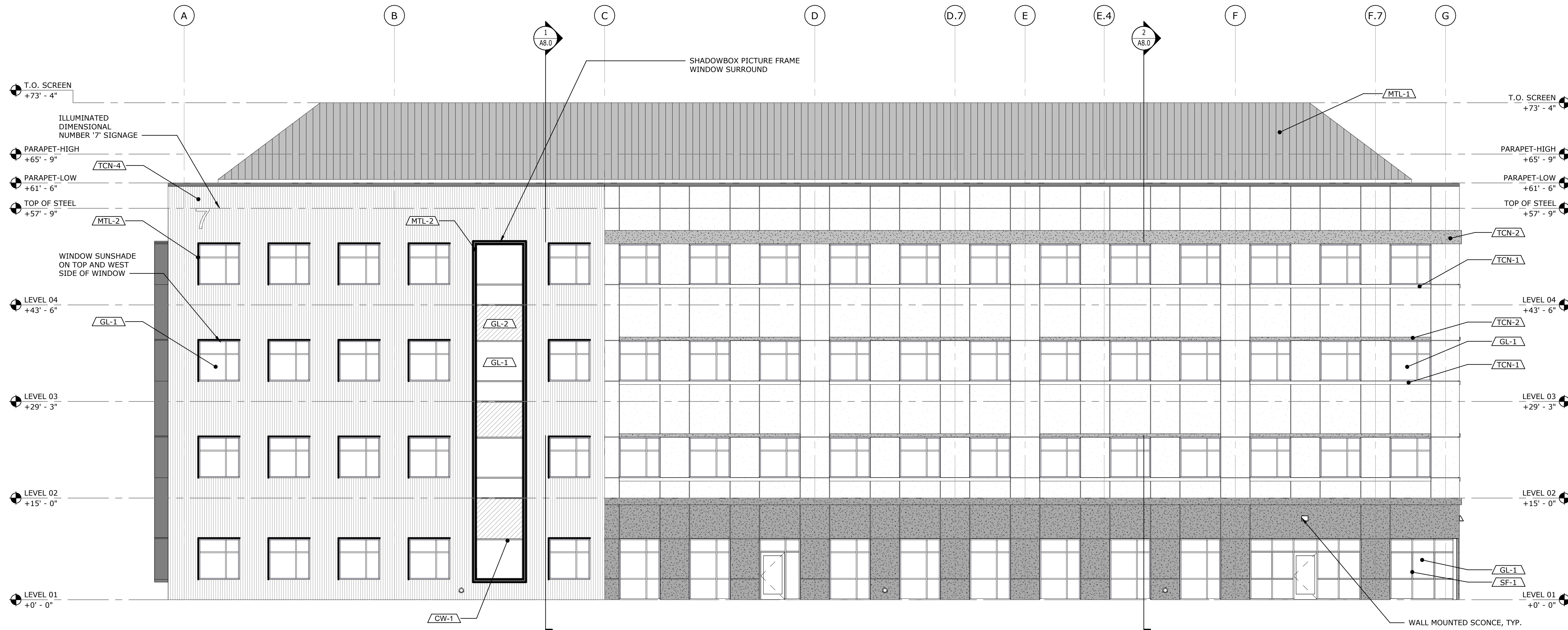


C1014.00  
AS SHOWN  
2 MAY 2022

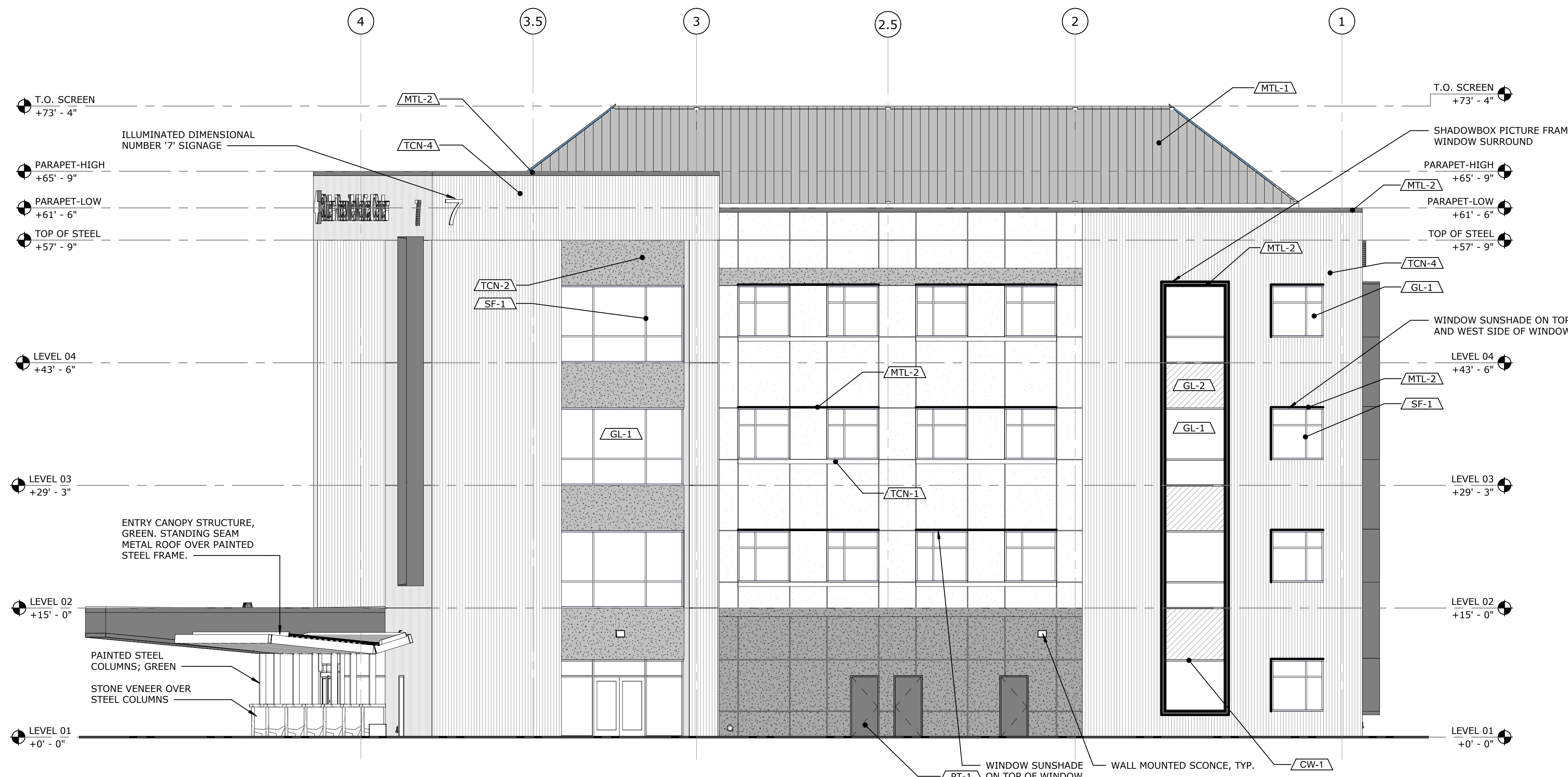
A4.0

EXTERIOR FINISH LEGEND

- /TCN-1 THINSHELL CONCRETE - BEIGE
- /TCN-2 THINSHELL CONCRETE - GREEN
- /TCN-3 THINSHELL CONCRETE - BROWN
- /TCN-4 THINSHELL CONCRETE - BEIGE WITH VERTICAL TEXTURE
- /MTL-1 FACTORY PAINTED STANDING SEAM METAL - GREEN
- /MTL-2 FACTORY PAINTED METAL - GREEN
- /CW-1 CLEAR ANODIZED ALUMINUM CURTAINWALL
- /SF-1 CLEAR ANODIZED ALUMINUM STOREFRONT
- /GL-1 LOW-E VISION GLAZING
- /GL-2 SPANDREL GLAZING
- /PT-1 PAINTED BROWN TO MATCH CAMPUS STANDARD
- /PT-2 PAINTED BEIGE TO MATCH CAMPUS STANDARD

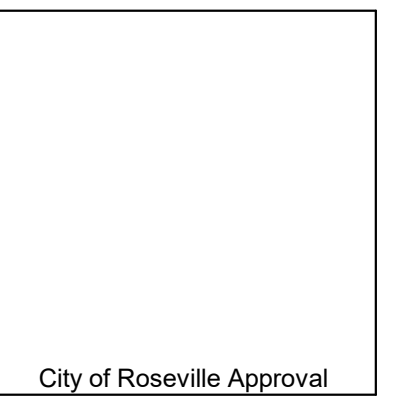


1 EXTERIOR ELEVATION - SOUTH - ENTITLEMENTS  
1/8" = 1'-0"



2 EXTERIOR ELEVATION - WEST - ENTITLEMENTS  
1/8" = 1'-0"

CITY APPROVAL STAMP



THIS DRAWING IS NOT FINAL OR TO BE USED FOR CONSTRUCTION UNTIL IT IS SIGNED BY THE ARCHITECT/ENGINEER

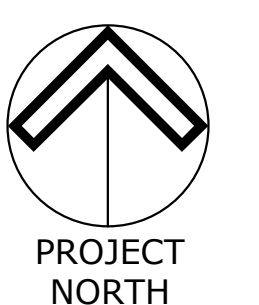
ENTITLEMENT PACKAGE

REVISION BY DATE

SUTTER ROSEVILLE MEDICAL CENTER  
MEDICAL OFFICE  
BUILDING 7

7 MEDICAL PLAZA  
ROSEVILLE, CA 95661

BUILDING ELEVATIONS

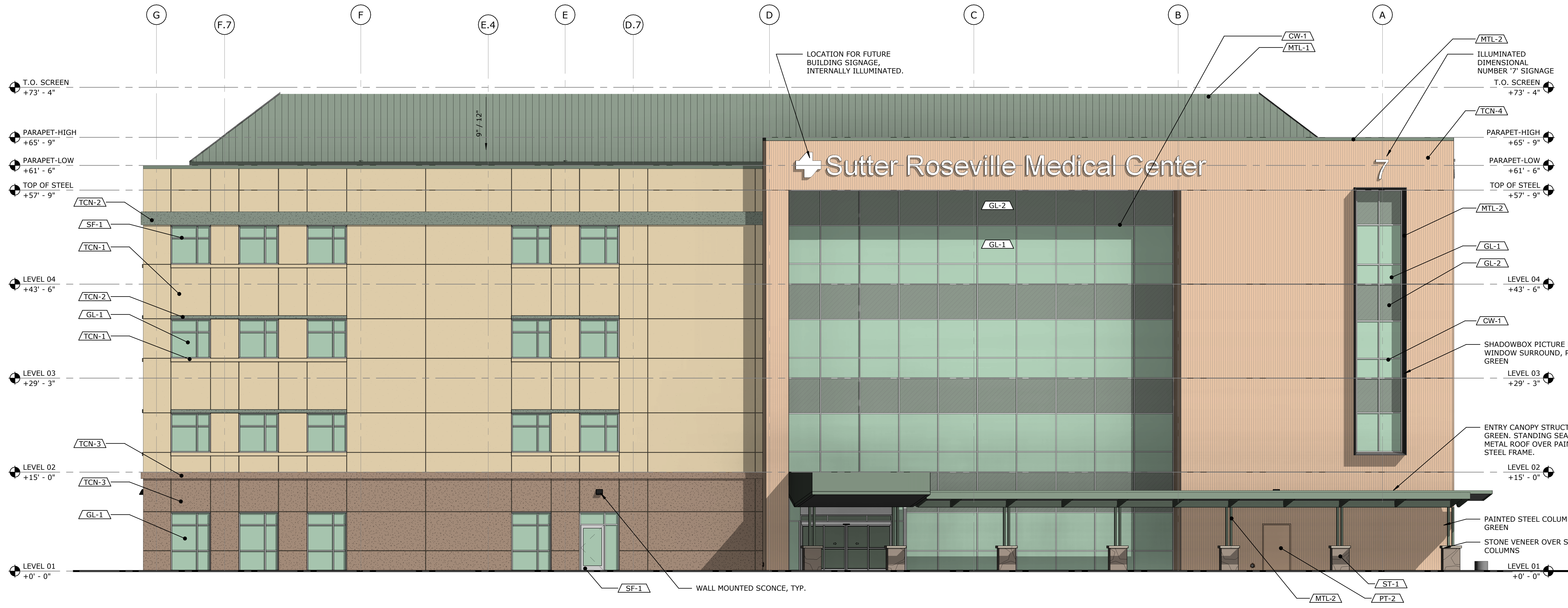


C1014.00  
AS SHOWN  
2 MAY 2022

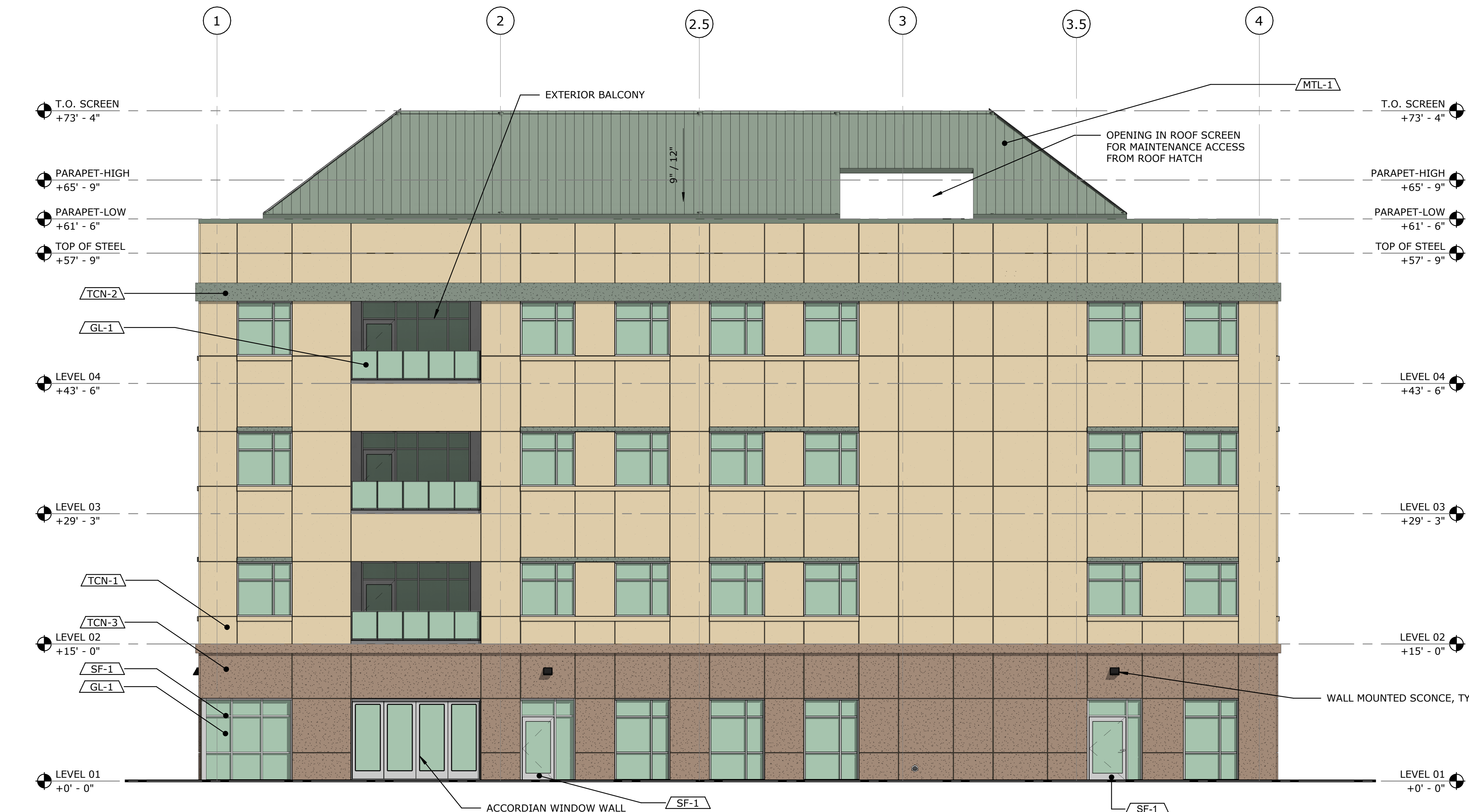
A5.0

EXTERIOR FINISH LEGEND

- /TCN-1 THINSHELL CONCRETE - BEIGE
- /TCN-2 THINSHELL CONCRETE - GREEN
- /TCN-3 THINSHELL CONCRETE - BROWN
- /TCN-4 THINSHELL CONCRETE - BEIGE WITH VERTICAL TEXTURE
- /MTL-1 FACTORY PAINTED STANDING SEAM METAL - GREEN
- /MTL-2 FACTORY PAINTED METAL - GREEN
- /ST-1 FIELDSTONE - RIVER ROCK
- /CW-1 CLEAR ANODIZED ALUMINUM CURTAINWALL
- /SF-1 CLEAR ANODIZED ALUMINUM STOREFRONT
- /GL-1 VISION GLAZING
- /GL-2 SPANDREL GLAZING
- /PT-1E PAINTED HOLLOW METAL DOOR - BROWN
- /PT-2E PAINTED HOLLOW METAL DOOR - BEIGE



1 COLOR ELEVATION - NORTH - ENTITLEMENTS  
1/8" = 1'-0"



2 COLOR ELEVATION - EAST - ENTITLEMENTS  
1/8" = 1'-0"

CITY APPROVAL STAMP



THIS DRAWING IS NOT FINAL OR TO BE USED FOR CONSTRUCTION UNTIL IT IS SIGNED BY THE ARCHITECT/ENGINEER

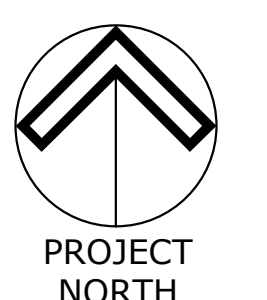
ENTITLEMENT PACKAGE

REVISION BY DATE

SUTTER ROSEVILLE MEDICAL CENTER  
MEDICAL OFFICE  
BUILDING 7

7 MEDICAL PLAZA  
ROSEVILLE, CA 95661

COLOR ELEVATIONS

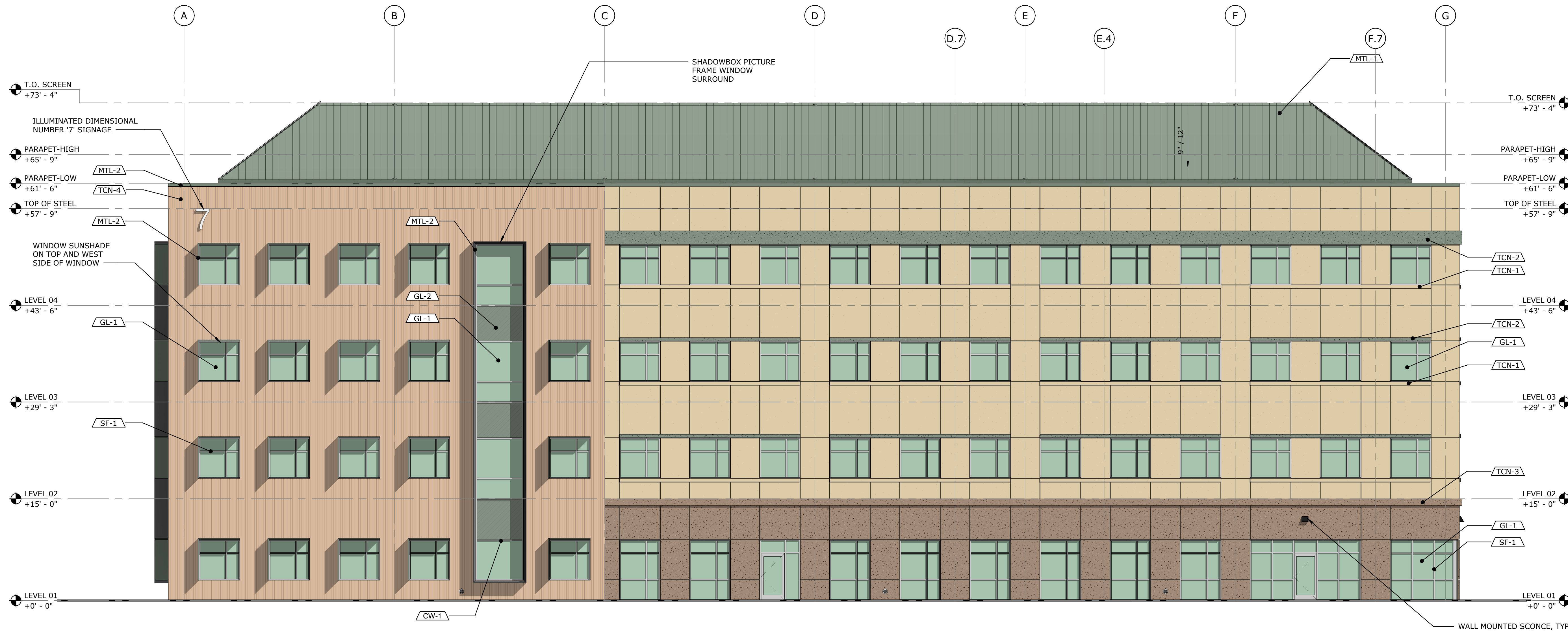


C1014.00  
AS SHOWN  
2 MAY 2022

A6.0

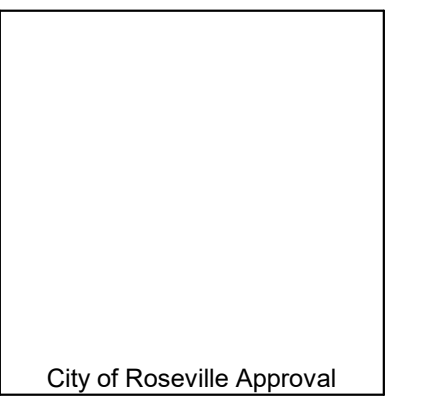
EXTERIOR FINISH LEGEND

- TCN-1 THINSHELL CONCRETE - BEIGE
- TCN-2 THINSHELL CONCRETE - GREEN
- TCN-3 THINSHELL CONCRETE - BROWN
- TCN-4 THINSHELL CONCRETE - BEIGE WITH VERTICAL TEXTURE
- MTL-1 FACTORY PAINTED STANDING SEAM METAL - GREEN
- MTL-2 FACTORY PAINTED METAL - GREEN
- ST-1 FIELDSTONE - RIVER ROCK
- CW-1 CLEAR ANODIZED ALUMINUM CURTAINWALL
- SF-1 CLEAR ANODIZED ALUMINUM STOREFRONT
- GL-1 VISION GLAZING
- GL-2 SPANDREL GLAZING
- PT-1E PAINTED HOLLOW METAL DOOR - BROWN
- PT-2E PAINTED HOLLOW METAL DOOR - BEIGE



1 COLOR ELEVATION - SOUTH - ENTITLEMENTS  
1/8" = 1'-0"

CITY APPROVAL STAMP



THIS DRAWING IS NOT FINAL OR TO BE USED FOR CONSTRUCTION UNTIL IT IS SIGNED BY THE ARCHITECT/ENGINEER

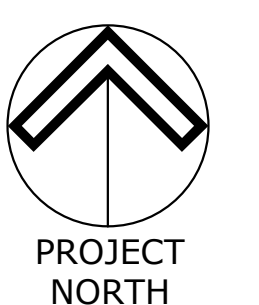
ENTITLEMENT PACKAGE

REVISION BY DATE

SUTTER ROSEVILLE MEDICAL CENTER  
MEDICAL OFFICE  
BUILDING 7

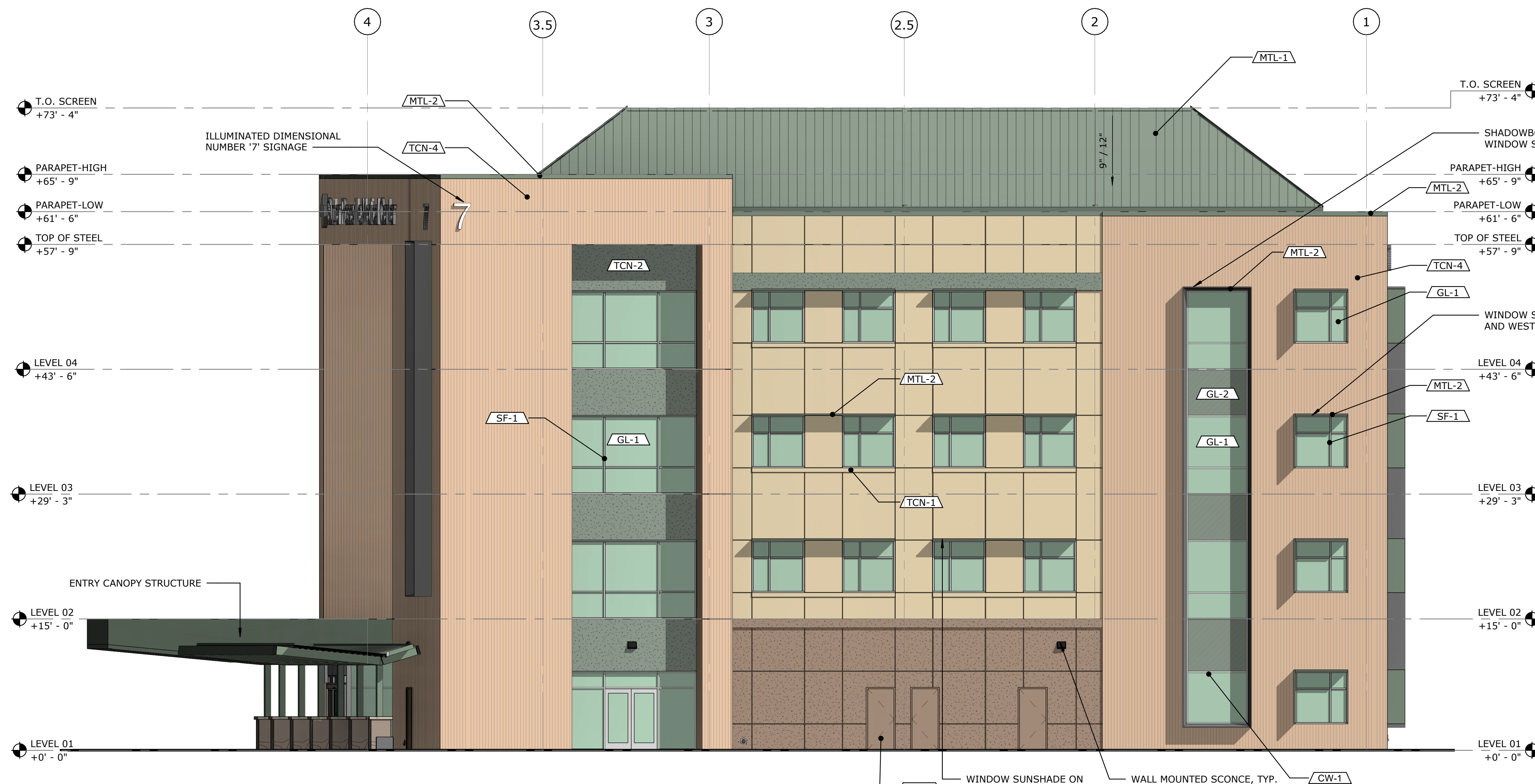
7 MEDICAL PLAZA  
ROSEVILLE, CA 95661

COLOR ELEVATIONS



C1014.00  
AS SHOWN  
2 MAY 2022

A7.0



2 COLOR ELEVATION - WEST - ENTITLEMENTS  
1/8" = 1'-0"



1 BUILDING SECTION 01 - ENTITLEMENTS  
1/8" = 1'-0"



2 BUILDING SECTION 02 - ENTITLEMENTS  
1/8" = 1'-0"

CITY APPROVAL STAMP



THIS DRAWING IS NOT FINAL OR TO BE USED FOR CONSTRUCTION UNTIL IT IS SIGNED BY THE ARCHITECT/ENGINEER

ENTITLEMENT PACKAGE

REVISION	BY	DATE

SUTTER ROSEVILLE MEDICAL CENTER  
MEDICAL OFFICE  
BUILDING 7

7 MEDICAL PLAZA  
ROSEVILLE, CA 95661

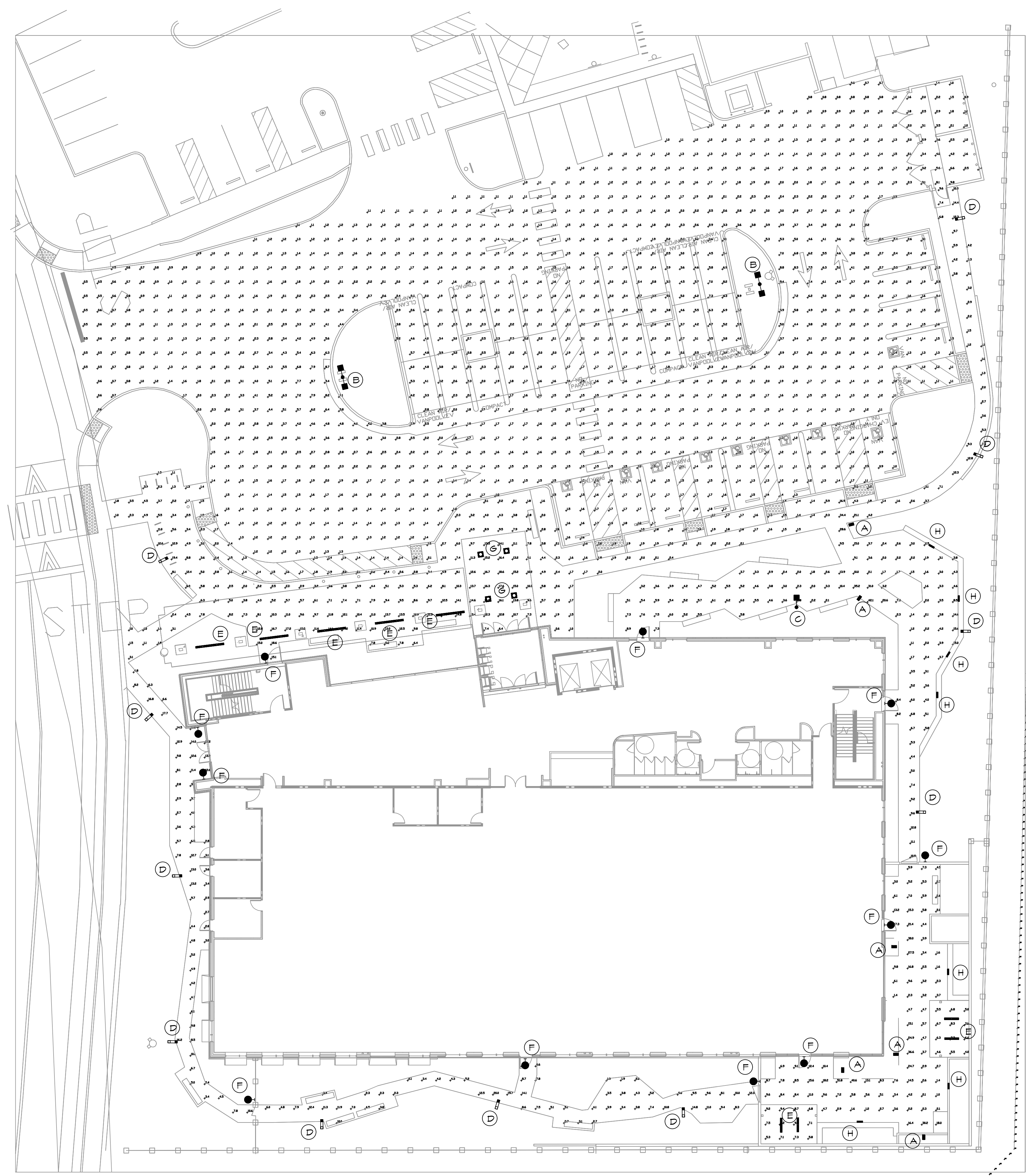
BUILDING SECTIONS

C1014.00  
AS SHOWN  
2 MAY 2022

A8.0

LIGHTING FIXTURE SCHEDULE						
TYPE	MANUFACTURER & CATALOG No.	LAMP	VOLTS / VA	MOUNTING	REMARKS	QTY / TOTAL MATRS
A	NLS LIGHTING TBL-36-T2-19-S9-40K-UNV-AB-TBD-DC-8	LED (1)	277 / 20	BOLLARD IN-GROUND	PATIO LIGHTING AND PATHWAY LIGHTING	6 / 160
B	CREE LIGHTING OSQM-B-16L-40K-T-3M-U	LED (2 HEADS)	277 / 208	POLE @ 25'-0"	PARKING LOT POLE LIGHT, DOUBLE HEAD	2 / 408
C	CREE LIGHTING OSQM-B-11L-40K-T-3M-U	LED (1)	277 / 172	POLE @ 25'-0"	OUTSIDE WAITING AREA POLE, SINGLE HEAD	1 / 12
D	NLS LIGHTING TRC-1-T2-16L-T-40K-T-UNV-S6L-TBD-F5P8-10	LED (1)	277 / 36	POLE @ 10'-0"	PATHWAY LIGHTING, PEDESTRIAN POLE	11 / 346
E	FRIMIS LIGHTING EL3-FL-LED-H-4K-UNV1-FD-MSP-W	LED (1)	277 / 36	SURFACE	DROP OFF AND PATIO LIGHTING, STRIP	16 / 576
F	BROWNLEE LIGHTING T075-24-TBD-HB2-BBC	LED (1)	277 / 92	MALL ABOVE DOOR	DOORWAY AND EGRESS LIGHTING, 90 MIN BATTERY BACKUP	10 / 320
G	LITON LIGHTING CH6LS1022-UE-D10-CR6L22-CN-TS954	LED (1)	277 / 98	DOWNLIGHT	ENTRY CANOPY CAN LIGHT, 90 MIN BATTERY BACKUP	4 / 112
H	COLE LIGHTING L2154DW-10	LED (1)	277 / 4	STEP LIGHT	STEP LIGHT IN IN-GROUND SEAT	6 / 54
	LANDSCAPE LIGHT TBD	LED (1)	277 / 6	UP LIGHT	LANDSCAPE LIGHTING THROUGH THE SITE UP LIGHTING THE TREES	

THERE IS 0.0FC OF LIGHT BLEEDING  
OVER THE PROPERTY LINE @ +10'.



SITE PHOTOMETRICS  
SCALE=1/16"=1'-0"

VASKO  
Electric  
INC.  
THE POWER TO SERVE YOU

4300 ASTORIA ST SACRAMENTO CA 95833  
(916) 568-7700  
LICENSE #471434

These drawings and specifications are working drawings for Vasko Electric, Inc. and are the property of Vasko Electric, Inc. and are not to be used for the purpose of bidding or installation by any other electrical contractor.

Signature

CITY APPROVAL STAMP



THIS DRAWING IS NOT FINAL OR TO BE USED FOR CONSTRUCTION UNTIL IT IS SIGNED BY THE ARCHITECT/ENGINEER

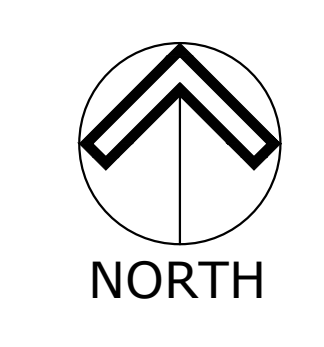
ENTITLEMENT PACKAGE

REVISION BY DATE

SUTTER ROSEVILLE MEDICAL CENTER  
MEDICAL OFFICE  
BUILDING 7

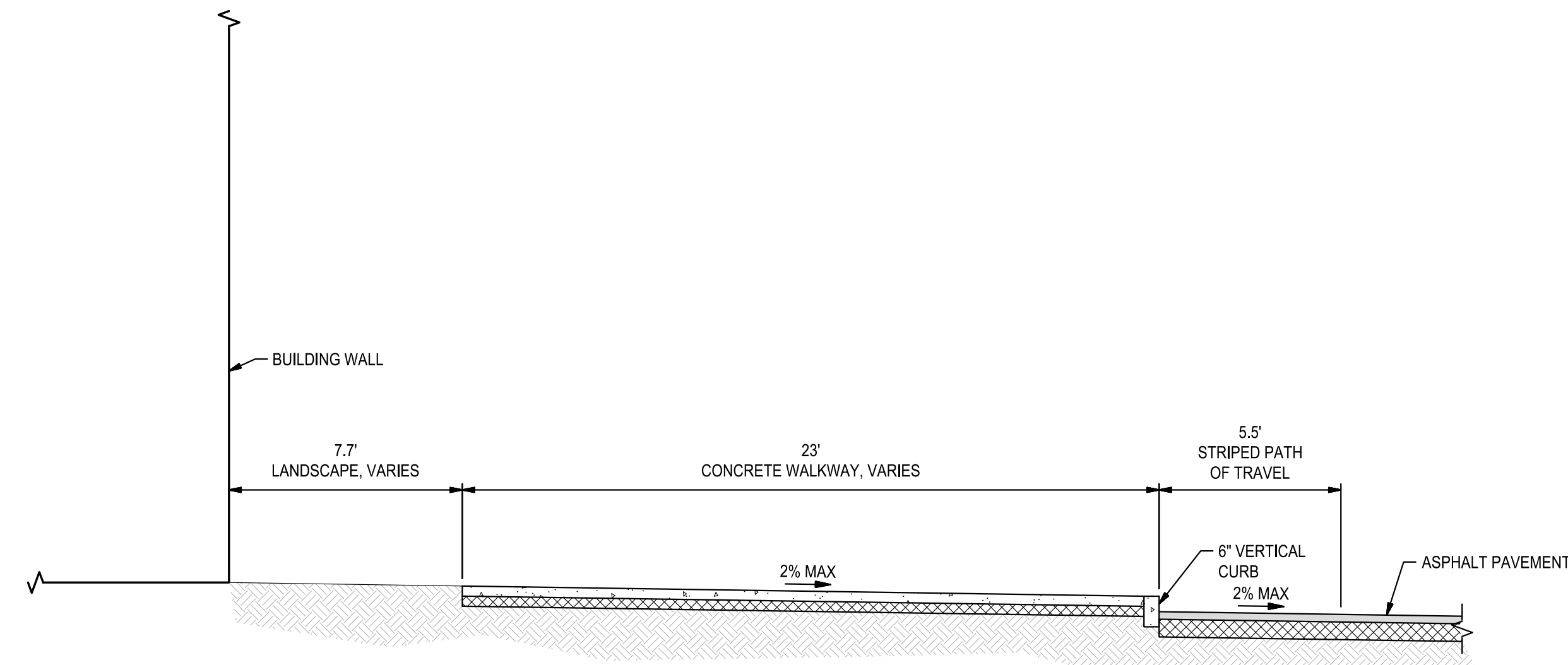
7 MEDICAL PLAZA DRIVE  
ROSEVILLE, CA 95661

SITE PHOTOMETRIC LAYOUT

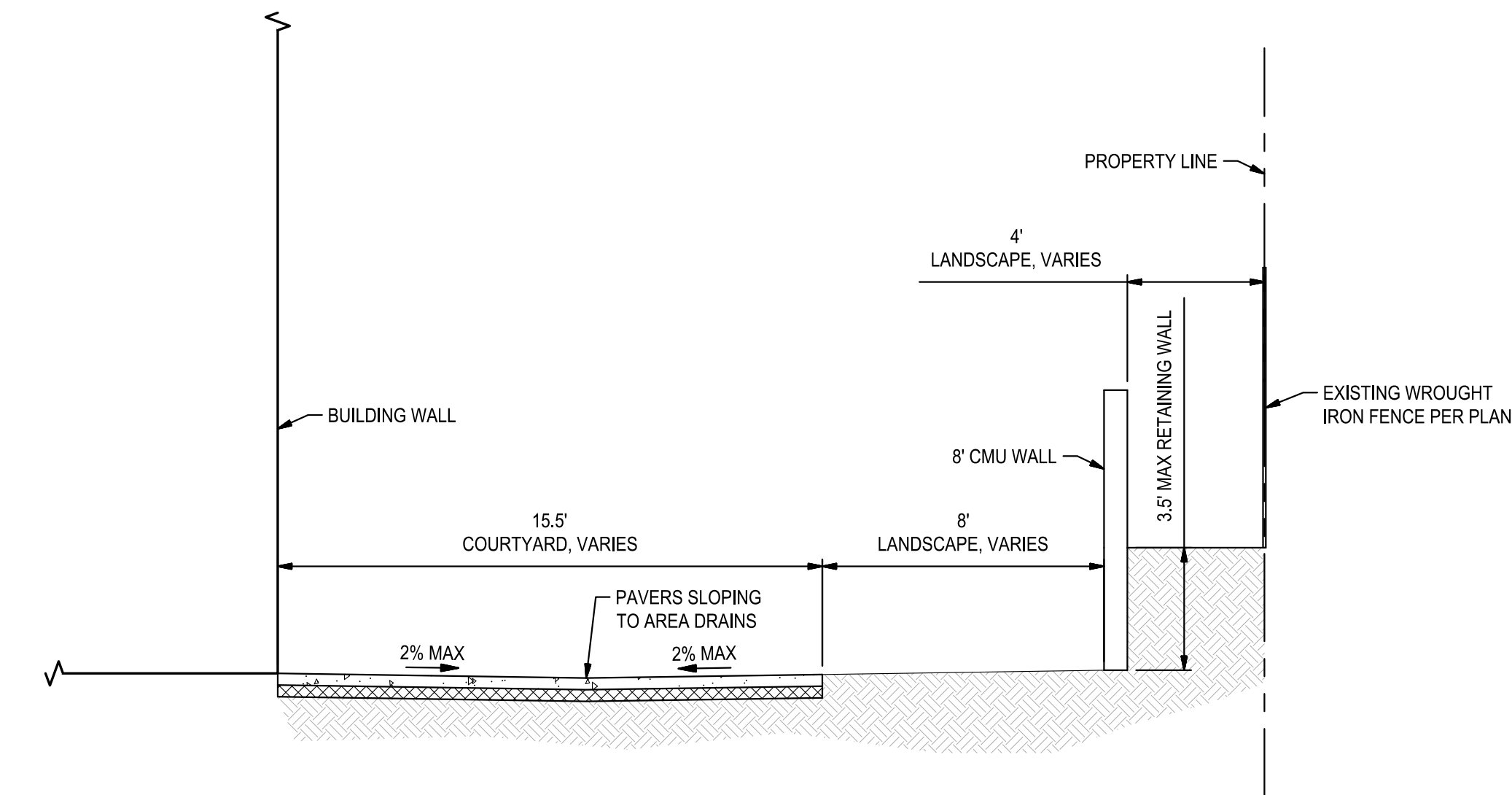


22134  
AS SHOWN  
2 MAY 2022

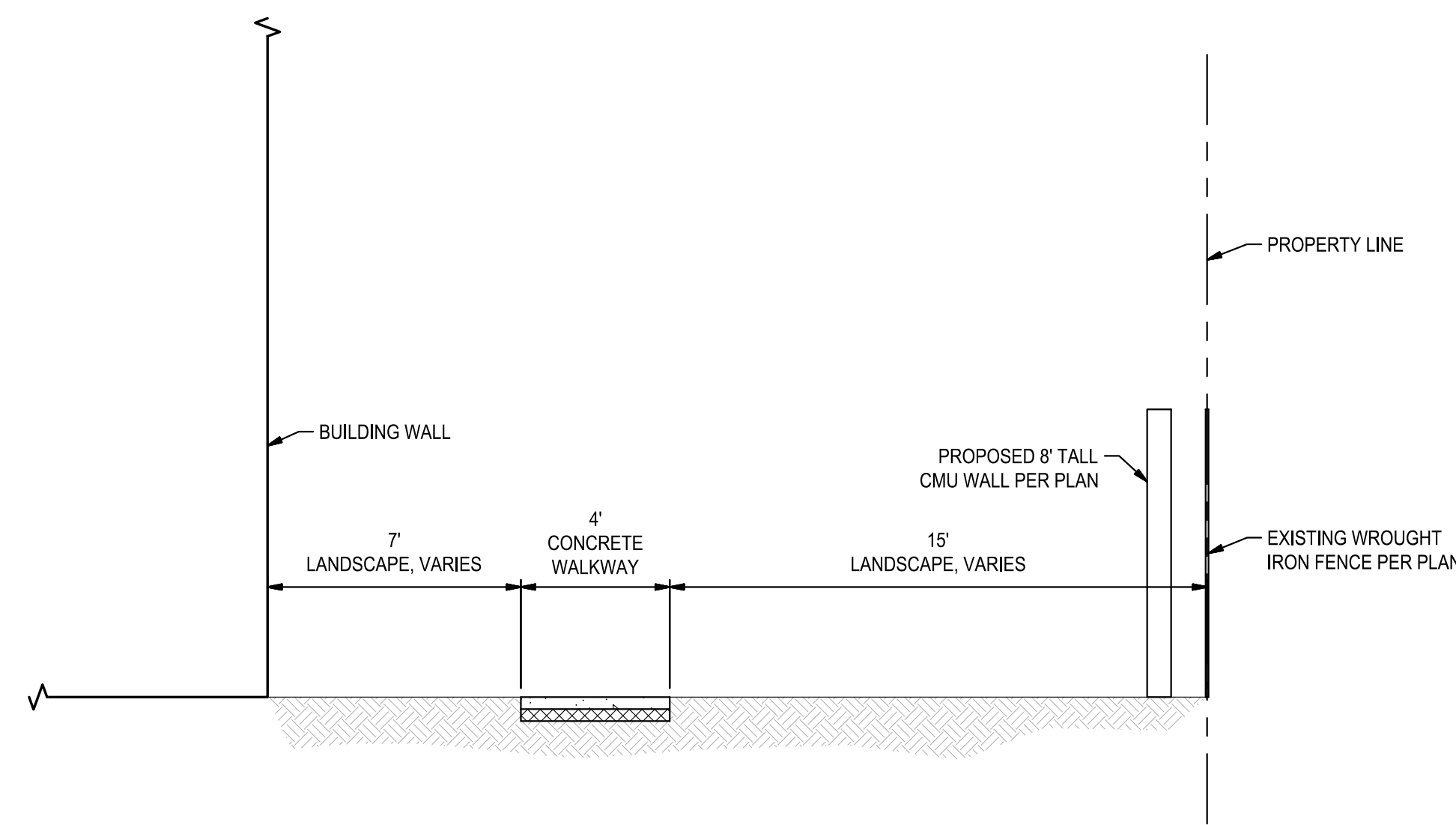
E2.2



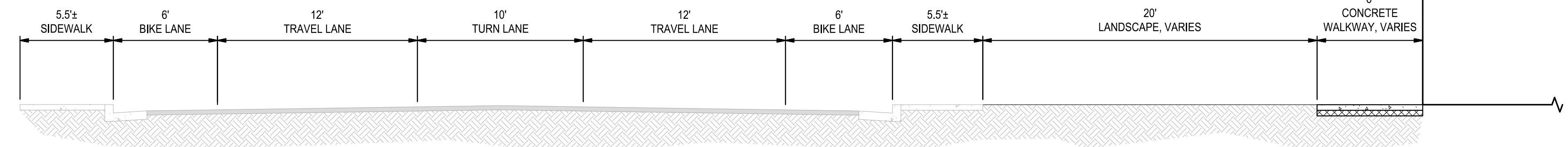
**1** CROSS-SECTION 1  
NOT TO SCALE



**2** CROSS-SECTION 2  
NOT TO SCALE



**3** CROSS-SECTION 3  
NOT TO SCALE



**4** CROSS-SECTION 4  
NOT TO SCALE

CITY APPROVAL STAMP



THIS DRAWING IS NOT FINAL OR TO BE USED FOR CONSTRUCTION UNTIL IT IS SIGNED BY THE ARCHITECT/ENGINEER.

ENTITLEMENT PACKAGE

REVISION BY DATE

SUTTER ROSEVILLE MEDICAL CENTER  
MEDICAL OFFICE  
BUILDING 7

7 MEDICAL PLAZA  
ROSEVILLE, CA 95661

CROSS-SECTIONS

C1014.00

2 MAY 2022

C4.1



